

Indicator: Conservation Lands (focus areas)Question

How much of the Conservation Focus Areas in the Piscataqua Region are permanently conserved or considered conserved public lands?

Short Answer

In 2017, 34.4% of Conservation Focus Areas (CFAs) in New Hampshire and 14.2% of CFAs in Maine were conserved. This represents a combined impact of 40.9% of progress towards the PREP goal of conserving 75% of all total acres in the CFAs. Given the challenges associated with conserving these important lands, the goal of conserving 75% (or 124,659 acres) of these core focus areas in both ME and NH by 2025 will take significant additional effort to achieve.

PREP Goal

Conserve 75% (124,659 acres) of lands identified as conservation focus areas by 2025 (from the PREP Comprehensive Conservation and Management Plan, PREP 2010).

Why This Matters

The Piscataqua Region is home to exceptional, unfragmented natural areas and corridors supporting important wildlife populations, water filtration capacity and storm buffering. Due to the infrastructure and growth pressures in our region, there is limited time to protect these areas in order to ensure they will continue to provide benefits for future generations.

Explanation (from 2018 State of Our Estuaries Report)

The Land Conservation Plan for New Hampshire's Coastal Watersheds (Zankel et al. 2006) and *The Land Conservation Plan for Maine's Piscataqua Region Watersheds* (Walker et al. 2010) are two science-based regional conservation master plans developed by a range of municipal, regional, and technical partners to guide conservation efforts throughout the region. The plans identify 90 CFAs that have high conservation values associated with them (such as rare habitat for threatened or endangered species). Of the 166,212 acres that fall within these designated CFAs, a total of 51,062 acres have been permanently protected (40.9% of progress towards the PREP goal of 124,659 acres). That represents an increase of 3.7% since 2011 or 5,197 new conserved acres, with the majority of these increases being in NH. There are a few notable areas where gains have been significant (over 50% increases since 2011), including the Winnicut River, Isinglass River, Kennard Hill and Birch Hill Lowlands. There are 16 CFAs where 50% or more of the acres have been protected (see Figure CF-1). CFAs where 70% or more have been protected include the Upper and Middle Winnicut, Creek Pond Marsh, Lower Lubberland Creek, Exeter River, Fabyan Point and Laroche and Woodman Brooks. Continued, focused efforts are needed to meet the goal in protecting 75% of these CFAs by 2025.

Methods and Data Sources

The general conservation lands database was queried to identify the intersection of the conservation lands data and conservation focus areas data within the Piscataqua Region watershed (HUC8 01060003). Only core areas for conservation focus areas were used for this analysis (Table CF-1, CF-2.)

Data Sources

The most recent dataset of conservation lands from the Maine Office of GIS for the Maine towns and NH GRANIT for the New Hampshire towns were the primary data source for this indicator. Conservation focus area boundaries were obtained from Zankel et al. (2006) and Walker et al. (2010).

References Cited

PREP 2010. Piscataqua Region Comprehensive Conservation and Management Plan, Piscataqua Region Estuaries Partnership: D.B.Truslow Associates, Mettee Planning Consultants, 2010, Durham, NH.
<http://scholars.unh.edu/prep/22/>

Walker S, Smith T, Schumacher P, Czapiga J, Sowers D, Oman-Saltmarsh J, Dest P. 2010. The Land Conservation Plan for Maine's Piscataqua Region Watersheds. Maine Beginning with Habitat, Wells National Estuarine Research Reserve, Southern Maine Regional Planning Commission, and Piscataqua Region Estuaries Partnership. Published by the Piscataqua Region Estuaries Partnership, Durham, NH.
<http://scholars.unh.edu/prep/32/>

Zankel M, Copeland C, Ingraham P, Robinson J, Sinnott C, Sundquist D, Walker T, Alford J. 2006. The Land Conservation Plan for New Hampshire's Coastal Watershed. PREP Publications. 174.
<http://scholars.unh.edu/prep/174>

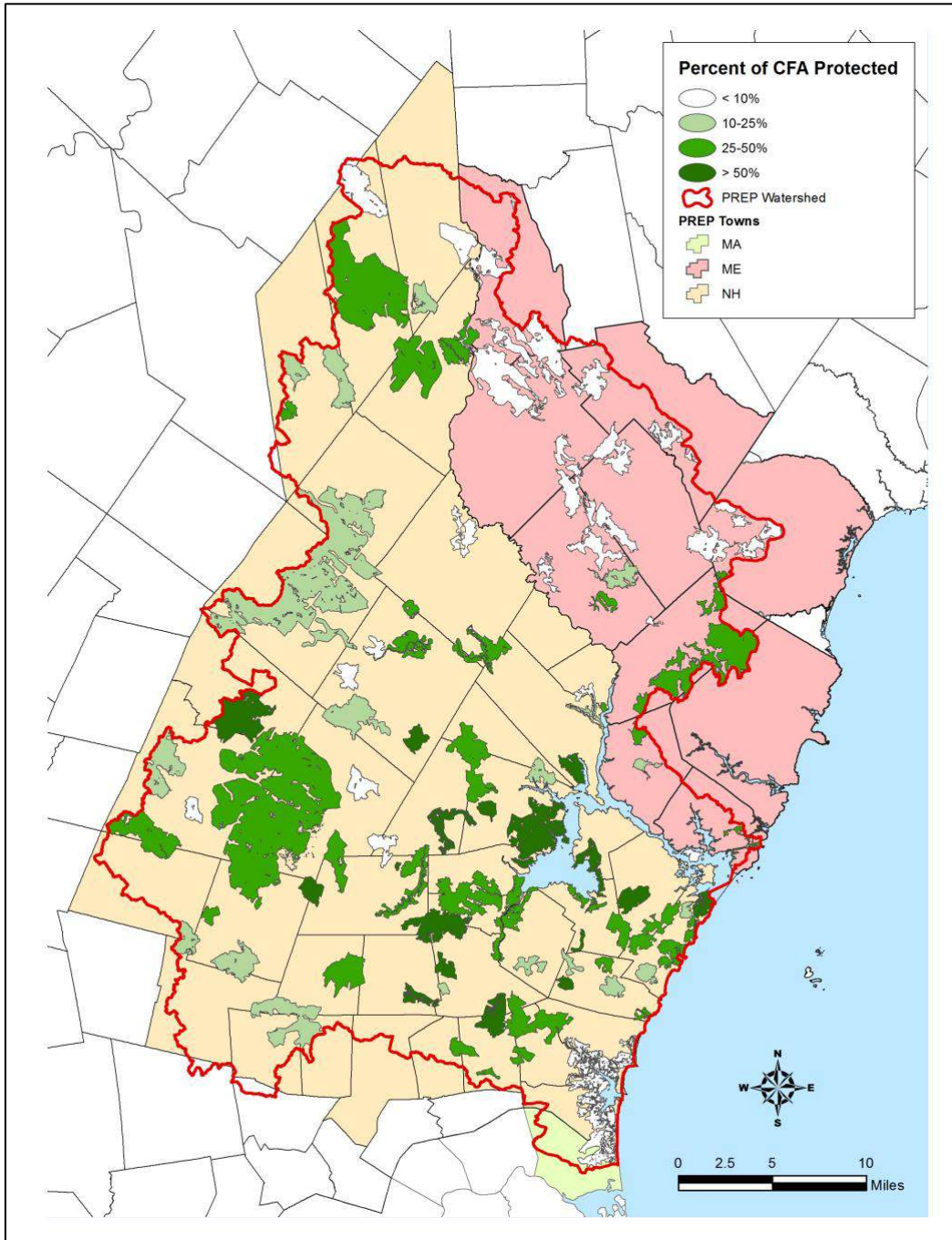


Figure CF-1. Percent of each Conservation Focus Area in the Piscataqua Region conserved.
Data Source: NH GRANIT.

Table CF-1: Conservation lands in individual conservation focus areas in New Hampshire in 2017.

Core Focus Area Name	Conservation Lands 2017 (acres)	Area of Core CFA (acres)	Percent of Core CFA Area (2017)	Conservation Lands 2011 (acres)	Percent of Core CFA area (2011)	Acreage Change	Percentage Change
Awcomin Marsh	346.4	885.0	39.1%	334.1	37.7%	12.3	1.4%
Bailey Brook	138.5	564.2	24.6%	115.7	20.5%	22.8	4.1%
Bayside Point	120.7	333.1	36.2%	120.7	36.2%	0.0	0.0%
Bellamy River	529.4	796.0	66.5%	529.4	66.5%	0.0	0.0%
Birch Hill Road Lowlands	30.2	57.7	52.2%	0.0	0.0%	30.2	52.2%
Bloody and Dudley Brooks	357.2	552.8	64.6%	361.2	65.3%	-3.9	-0.7%
Blue Hills	3,708.2	16,879.0	22.0%	2,894.7	17.2%	813.5	4.8%
Bumfagging Hill	465.0	2,361.1	19.7%	478.9	20.3%	-13.8	-0.6%
Candia Road	0.0	549.2	0.0%	0.0	0.0%	0.0	0.0%
Cochecho Headwaters	173.5	1,691.1	10.3%	173.5	10.3%	0.0	0.0%
Coldrain Pond	129.5	906.3	14.3%	129.5	14.3%	0.0	0.0%
Cooper Cedar Woods	169.2	379.5	44.6%	130.9	34.5%	38.3	10.1%
Creek Pond Marsh	632.6	671.2	94.2%	632.6	94.2%	0.0	0.0%
Crommet/Lubberland Creeks	2,312.0	3,798.7	60.9%	2,201.5	58.0%	110.5	2.9%
Davis and Oak Hill	38.8	1,337.3	2.9%	38.8	2.9%	0.0	0.0%
Dogtown Swamp	40.5	164.1	24.7%	35.8	21.8%	4.7	2.9%
Dumplingtown Hill	118.7	364.9	32.5%	118.7	32.5%	0.0	0.0%
Exeter River	480.8	620.3	77.5%	436.5	70.4%	44.3	7.1%
Fabyan Point	799.1	1,071.6	74.6%	797.8	74.4%	1.3	0.2%
Fordway Brook Headwaters	125.5	941.4	13.3%	118.3	12.6%	7.2	0.7%
Fresh Creek	0.0	325.9	0.0%	0.0	0.0%	0.0	0.0%
Garvin Brook	37.0	82.8	44.7%	37.0	44.7%	0.0	0.0%
Great Bog	661.4	989.2	66.9%	645.4	65.2%	16.0	1.7%
Great Meadows	816.6	1,400.2	58.3%	816.7	58.3%	-0.1	0.0%
Hampton Marsh	645.6	7,437.6	8.7%	669.5	9.0%	-24.0	-0.3%
Hart Brook / Mt. Tenneriffe	1,121.8	3,503.0	32.0%	764.7	21.8%	357.1	10.2%
Johnson and Bunker Creeks	178.0	747.6	23.8%	178.0	23.8%	0.0	0.0%

Kennard Hill	575.2	1,294.6	44.4%	0.0	0.0%	575.2	44.4%
Lamprey River	627.8	1,722.2	36.5%	536.6	31.2%	91.2	5.3%
Langley and Cyrus Ponds	0.0	1,027.8	0.0%	0.0	0.0%	0.0	0.0%
LaRoche and Woodman Brooks	350.5	444.1	78.9%	350.6	78.9%	0.0	0.0%
Lower Berry's Brook	58.4	270.2	21.6%	58.4	21.6%	0.0	0.0%
Lower Cochecho River	107.2	485.5	22.1%	107.2	22.1%	0.0	0.0%
Lower Fordway Brook	214.0	1,679.1	12.7%	201.5	12.0%	12.5	0.7%
Lower Isinglass River	518.2	1,260.9	41.1%	224.3	17.8%	293.8	23.3%
Lower Lamprey River	616.6	1,228.1	50.2%	535.7	43.6%	80.8	6.6%
Lower Little River	76.8	195.9	39.2%	76.8	39.2%	0.0	0.0%
Lower Lubberland Creek	170.7	239.1	71.4%	189.1	79.1%	-18.4	-7.7%
Lower Piscassic River	1,280.1	3,027.2	42.3%	1,208.3	39.9%	71.9	2.4%
Lower Winnicut River	61.4	229.0	26.8%	61.4	26.8%	0.0	0.0%
Middle Isinglass River	0.0	504.4	0.0%	0.0	0.0%	0.0	0.0%
Middle Little River	102.0	595.2	17.1%	95.5	16.0%	6.6	1.1%
Middle Piscassic River	1,218.4	2,281.3	53.4%	1,215.6	53.3%	2.8	0.1%
Middle Winnicut River	118.6	163.9	72.4%	36.8	22.4%	81.9	50.0%
Moose Mountains	3,960.5	8,788.7	45.1%	3,638.4	41.4%	322.1	3.7%
Muddy Pond	61.4	156.3	39.3%	61.4	39.3%	0.0	0.0%
North River / Rollins Brook	61.8	813.9	7.6%	33.7	4.1%	28.1	3.5%
Northeast Pond	733.9	1,803.3	40.7%	703.0	50.8%	30.9	-10.1%
Oyster River	1,006.6	2,691.1	37.4%	749.9	27.9%	256.6	9.5%
Packer Bog	394.1	815.1	48.4%	394.1	48.4%	0.0	0.0%
Parkman Brook	74.5	547.2	13.6%	74.5	13.6%	0.0	0.0%
Pawtuckaway Mountains	10,914.1	23,142.6	47.2%	10,293.5	44.5%	620.5	2.7%
Pawtuckaway River	424.9	749.0	56.7%	424.9	56.7%	0.0	0.0%
Pike Brook	57.4	2,338.7	2.5%	57.4	2.5%	0.0	0.0%
Preston Pond	110.2	342.5	32.2%	110.2	32.2%	0.0	0.0%
Rochester Heath Bog	49.2	1,024.0	4.8%	49.2	4.8%	0.0	0.0%
Rochester Neck	446.6	1,605.2	27.8%	354.5	22.1%	92.0	5.7%

Saddleback Mountain	1,841.3	3,342.9	55.1%	1,658.3	49.6%	183.0	5.5%
Seavey Creek / Fairhill Swamp	439.0	633.2	69.3%	439.8	69.4%	-0.7	-0.1%
Spruce Swamp	759.1	1,854.5	40.9%	452.8	24.4%	306.3	16.5%
Squamscott River	648.4	2,023.6	32.0%	638.1	31.5%	10.3	0.5%
Stonehouse Brook	0.0	726.5	0.0%	0.0	0.0%	0.0	0.0%
Taylor River and The Cove	767.5	2,421.9	31.7%	693.0	28.6%	74.4	3.1%
Thurston Pond / Hartford Brook	347.4	2,474.7	14.0%	382.9	15.5%	-35.5	-1.5%
Union Meadows	165.8	985.9	16.8%	43.9	4.5%	121.9	12.3%
Upper Berry's Brook	389.5	1,460.6	26.7%	326.9	22.4%	62.6	4.3%
Upper Exeter River	539.0	3,011.2	17.9%	395.3	13.1%	143.7	4.8%
Upper Great Brook	223.7	543.5	41.2%	185.9	34.2%	37.8	7.0%
Upper Isinglass River	203.5	853.8	23.8%	203.6	23.8%	0.0	0.0%
Upper Little River	86.7	326.6	26.5%	86.7	26.5%	0.0	0.0%
Upper North Branch River	1,227.3	2,879.9	42.6%	1,025.7	35.6%	201.6	7.0%
Upper Taylor River	122.5	439.0	27.9%	107.8	24.6%	14.6	3.3%
Upper Winnicut River	221.2	289.6	76.4%	49.3	17.0%	171.9	59.4%
Wallis Marsh	137.0	310.9	44.1%	137.6	44.3%	-0.6	-0.2%
Winnicut River / Cornelius Brook	50.4	329.4	15.3%	50.4	15.3%	0.0	0.0%
TOTAL:	46,737.0	135,784.6	34.4%	41,480.5	30.6%	5,256.5	3.8%

All reported acreages reflect ONLY those areas within the Piscataqua Region watershed.

2011 CFAs also included "Northeast Pond," however 2017 analysis does not include this CFA.

Table CF-2: Conservation lands in individual conservation focus areas in Maine in 2017.

Core Focus Area Name	Conservation Lands 2017 (acres)	Area of Core CFA (acres)	Percent of Core CFA Area (2017)	Conservation Lands 2011 (acres)	Percent of Core CFA area (2011)	Acreage Change	Percentage Change
Bauneg Beg Mountain	0.0	1571.7	0.0	0.0	0.0	0.0	0.0
Beaver Dam Heath	155.6	1051.4	0.1	120.9	0.1	34.7	0.0
Brave Boat Harbor/Gerrish Island	91.3	339.8	0.3	82.4	0.2	8.9	0.0
Cranberry Meadow	181.4	426.6	0.4	126.7	0.3	54.7	0.1
Gerrish Mountain	0.0	1282.9	0.0	32.8	0.0	-32.8	0.0
Knights Pond	0.0	113.5	0.0	0.0	0.0	0.0	0.0
Little River East	0.0	4372.2	0.0	0.0	0.0	0.0	0.0
Little River West	32.7	476.8	0.1	32.7	0.1	0.0	0.0
Merriland River Wetlands	294.3	3231.1	0.1	341.4	0.1	-47.1	0.0
Mt Agamenticus and York River Headwaters	3009.7	6845.7	0.4	3098.3	0.5	-88.6	0.0
Sanford Ponds	62.7	907.4	0.1	62.5	0.6	0.1	-0.6
Shapleigh Pond	0.0	77.2	0.0	0.0	0.0	0.0	0.0
South Acton Swamps	436.0	8179.9	0.1	424.8	0.1	11.2	0.0
Sturgeon Creek	49.3	295.9	0.2	49.3	0.2	0.0	0.0
West Sanford Swamps	12.5	1256.2	0.0	12.6	0.0	0.0	0.0
TOTAL:	4325.4	30428.3	0.1	4384.2	0.1	-58.8	0.0

All reported acreages reflect ONLY those areas within the Piscataqua Region watershed.
2011 CFAs also included "Northeast Pond," however 2017 analysis does not include this CFA.